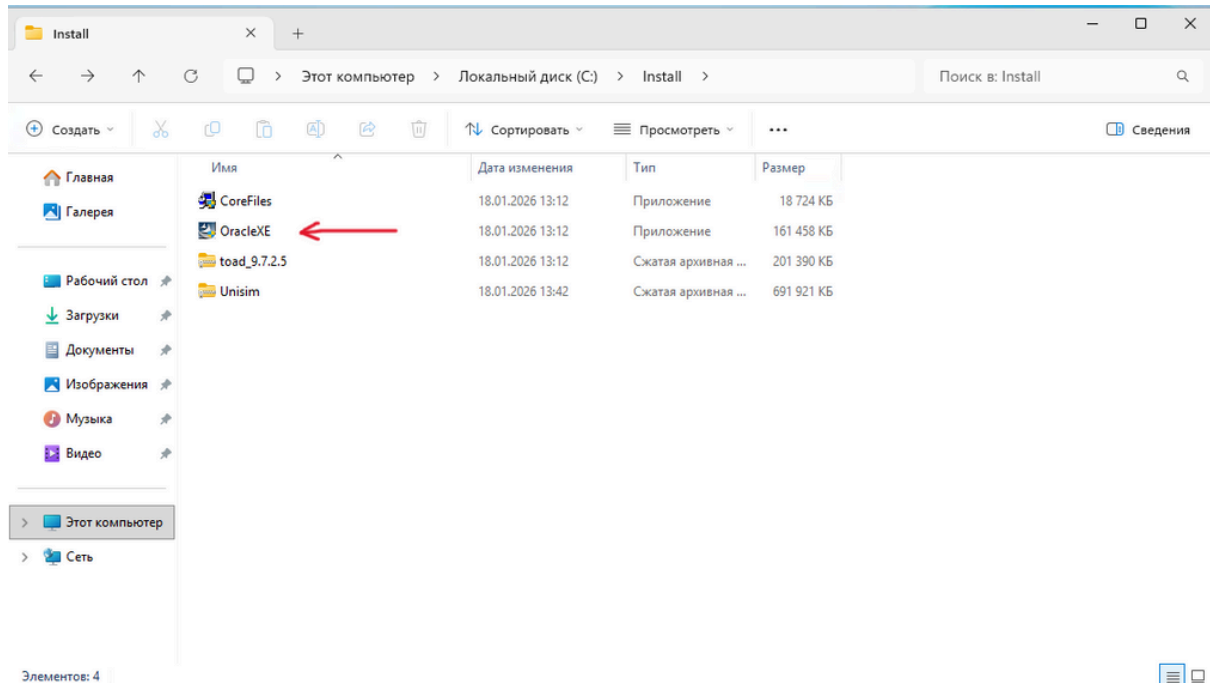
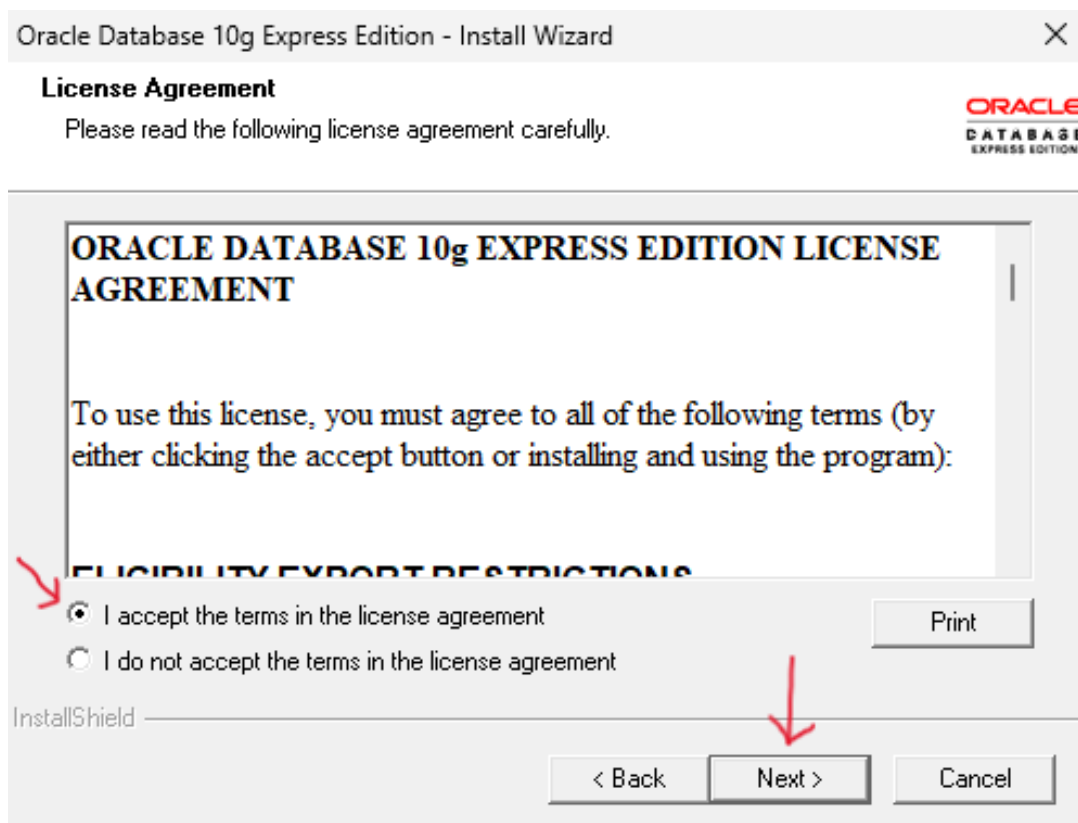


UNA install process

1. In map install we find exe file OracleXE, execute it



2. Follow instalation path



Oracle Database 10g Express Edition - Install Wizard

Choose Destination Location

Select folder where setup will install files.

Setup will install Oracle Database 10g Express Edition in the following folder.

To install to this folder, click Next. To install to a different folder, click Browse and select another folder.

<input checked="" type="checkbox"/> Oracle Database 10g Express Edition	1593016 K
---	-----------

Destination Folder
C:\oraclexe\ Browse...

Space Required on C: 1593016 K
Space Available on C: 178492944 K

InstallShield

< Back Next > Cancel

Oracle Database 10g Express Edition - Install Wizard

Specify Database Passwords

Enter and confirm passwords for the database. This password will be used for both the SYS and the SYSTEM database accounts.

Enter Password

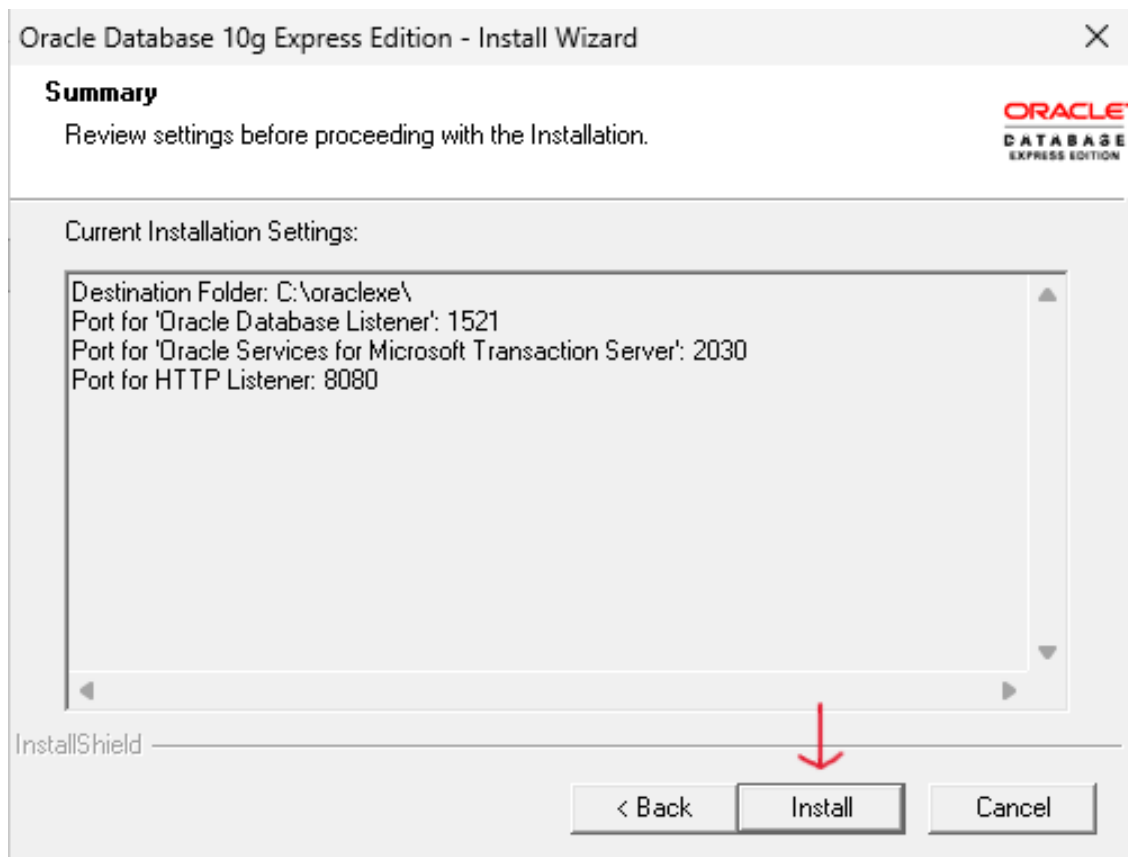
Confirm Password

Note: You should use the SYSTEM user along with the password you enter here to log in to the Database Home Page after the install is complete.

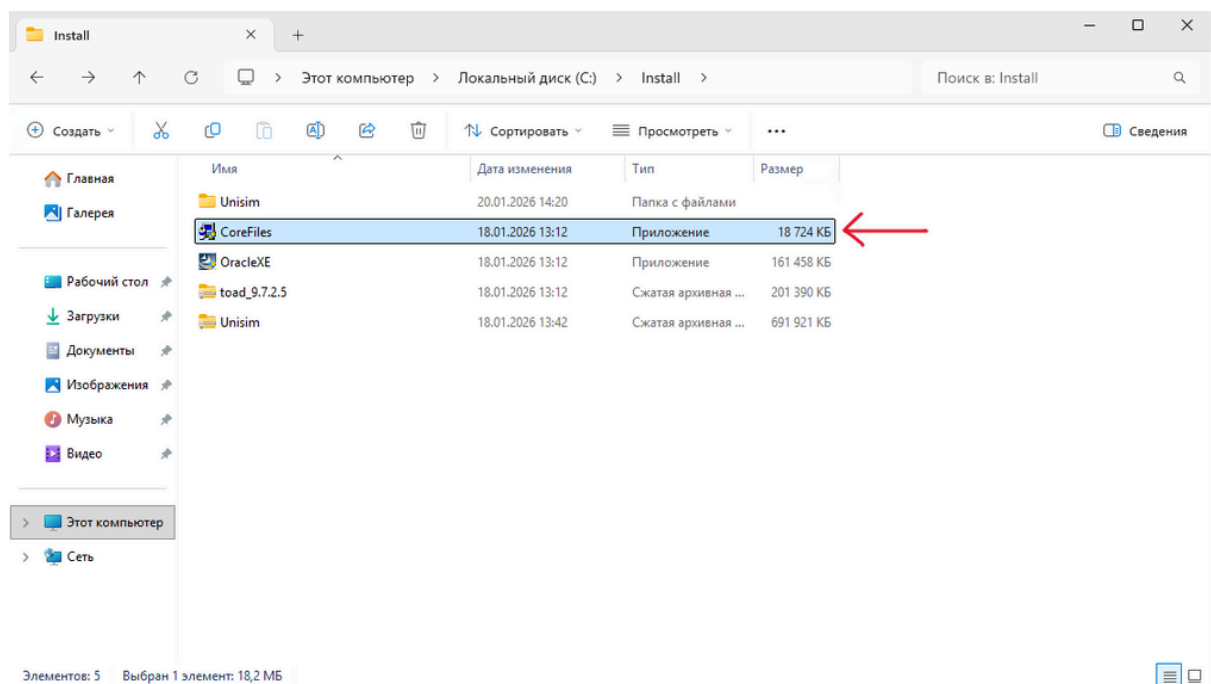
InstallShield

< Back Next > Cancel

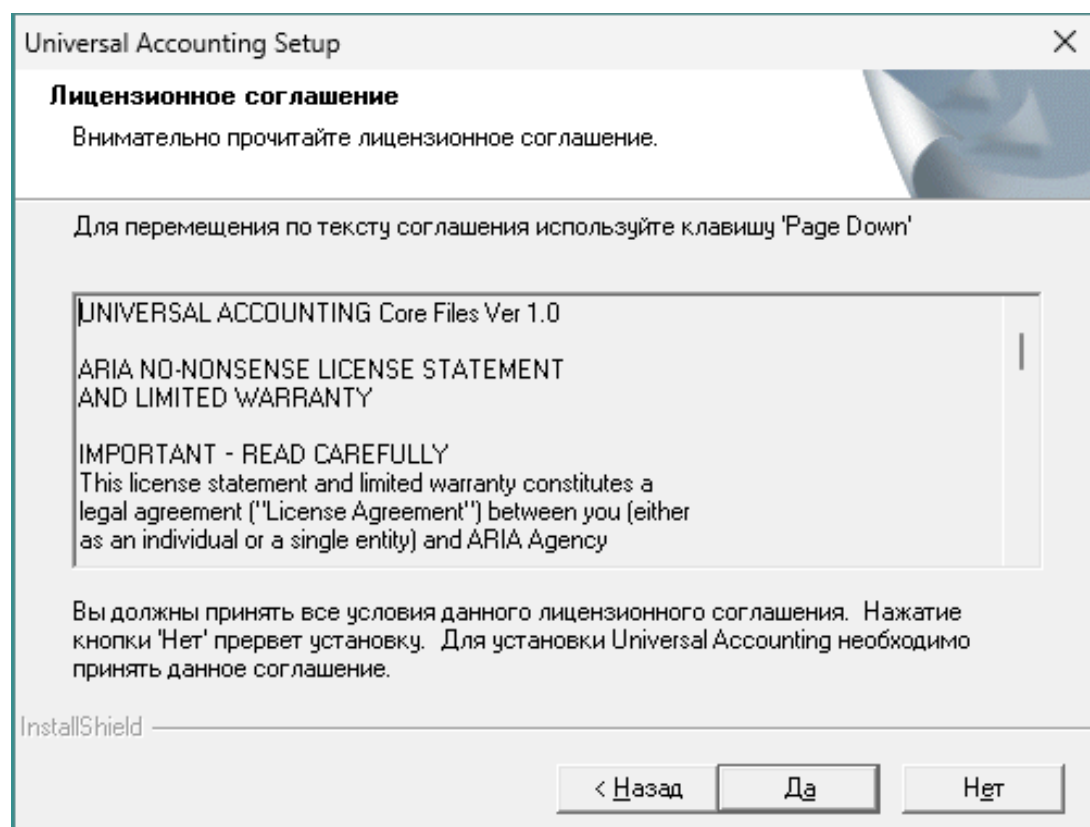
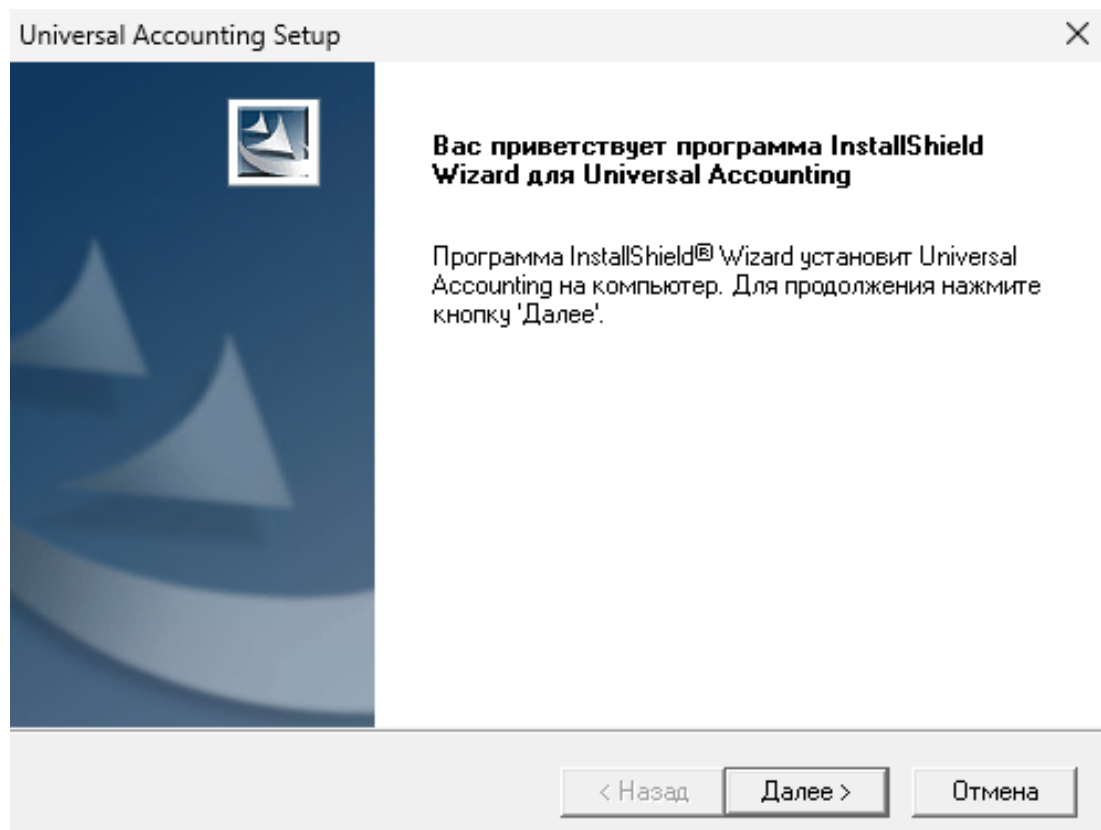
Password is - sys

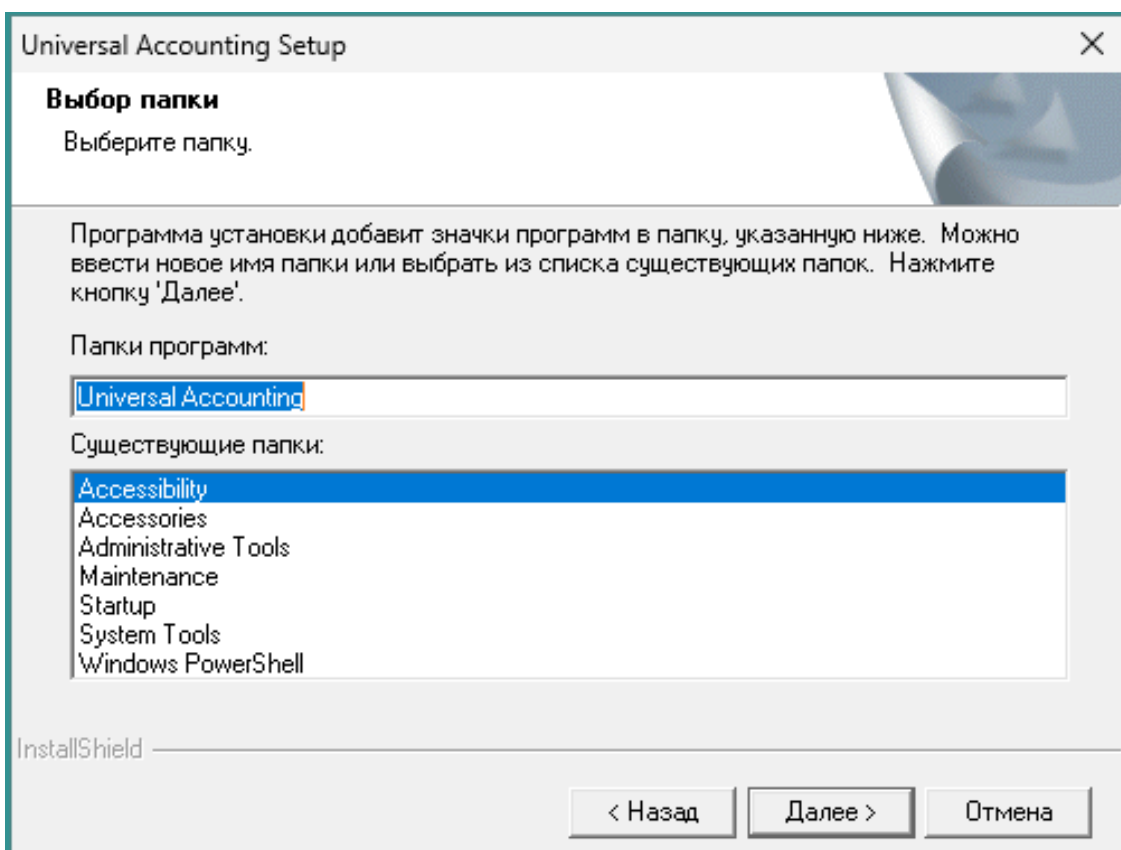
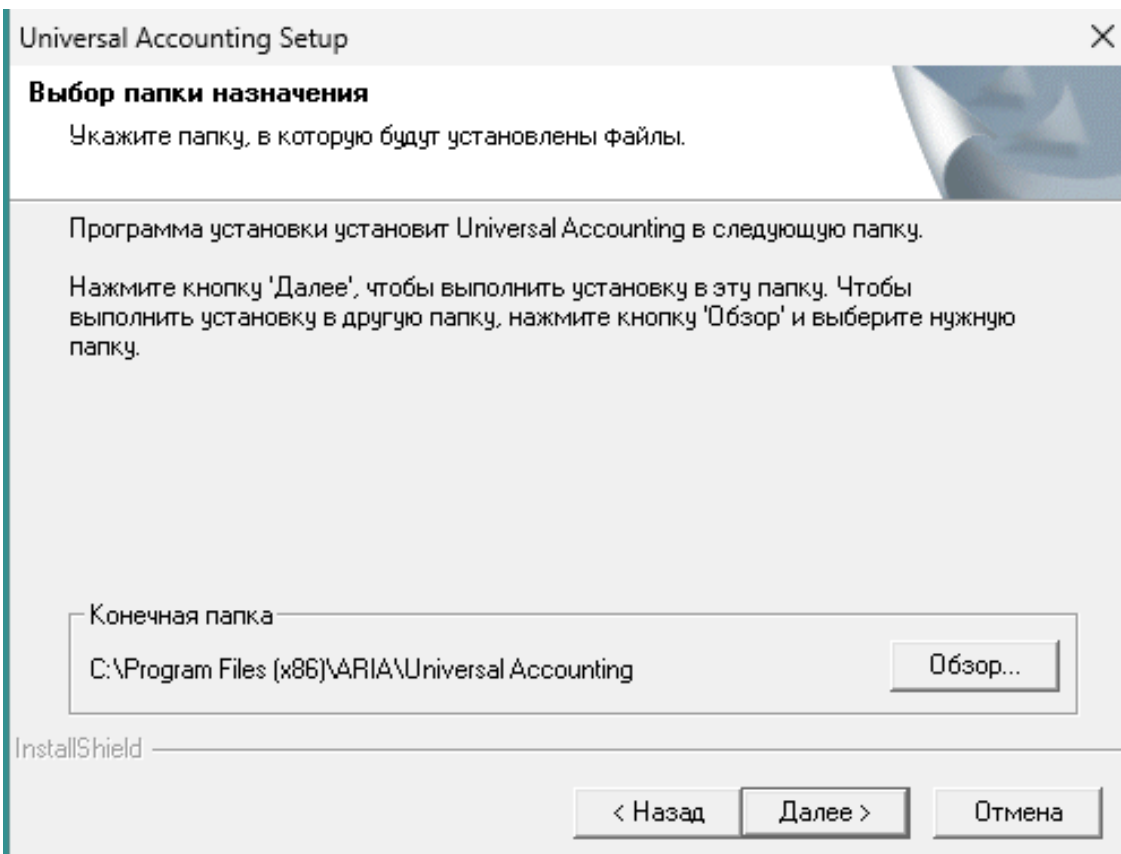


3. Next execute CoreFiles file



- Follow instalation path





Universal Accounting Setup



Программа InstallShield

Программа InstallShield Wizard успешно установила Universal Accounting. Нажмите кнопку 'Готово' для выхода из программы.

< Назад

Готово

Отмена

Oracle Database 10g Express Edition - Install Wizard

InstallShield Wizard Complete

Setup has finished installing Oracle Database 10g Express Edition on your computer.



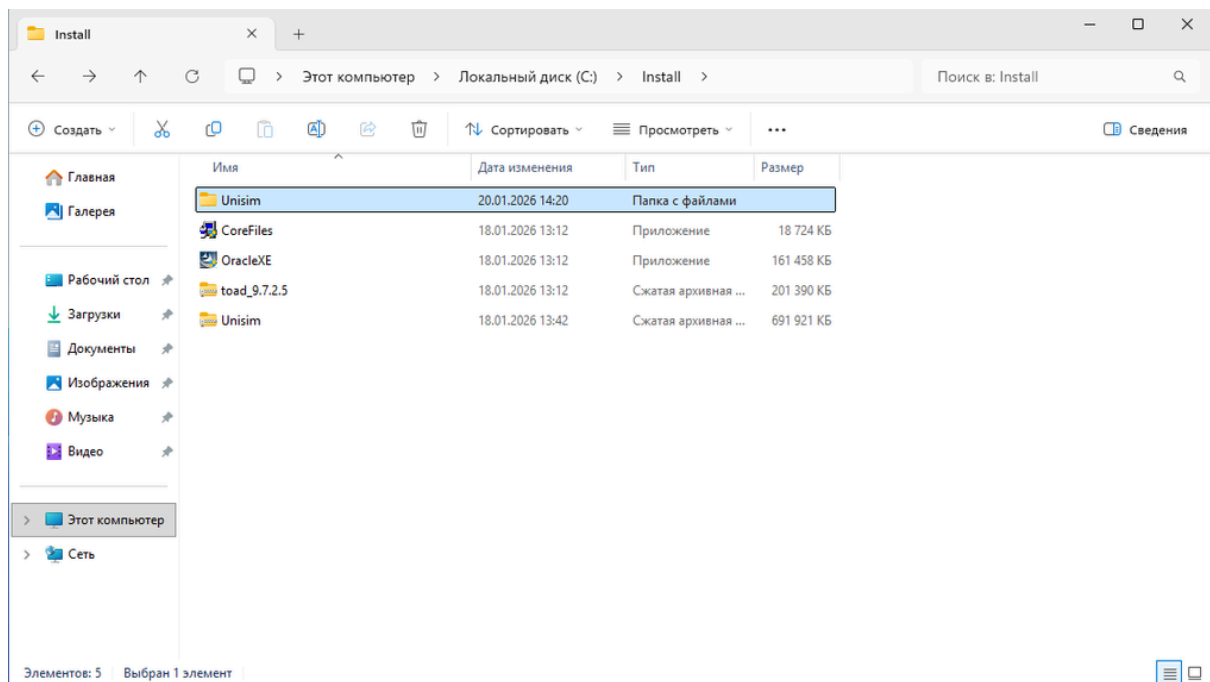
☒ Launch the Database homepage.

< Back

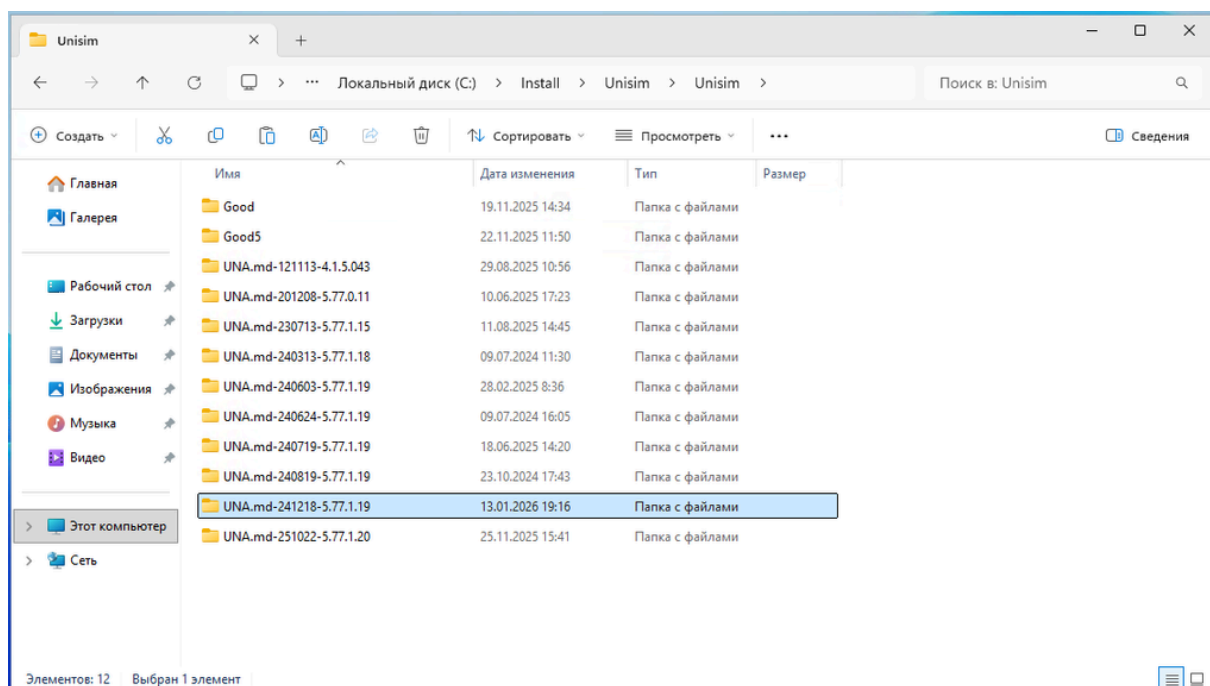
Finish

Cancel

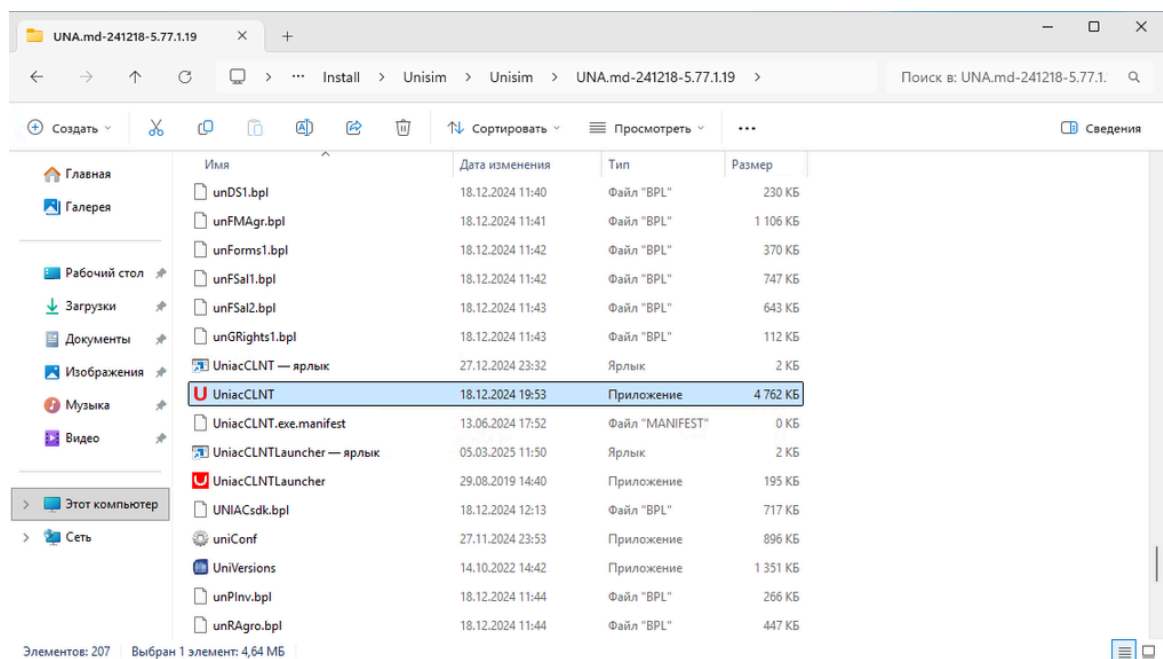
4. We need to unzip the Unisim folder.



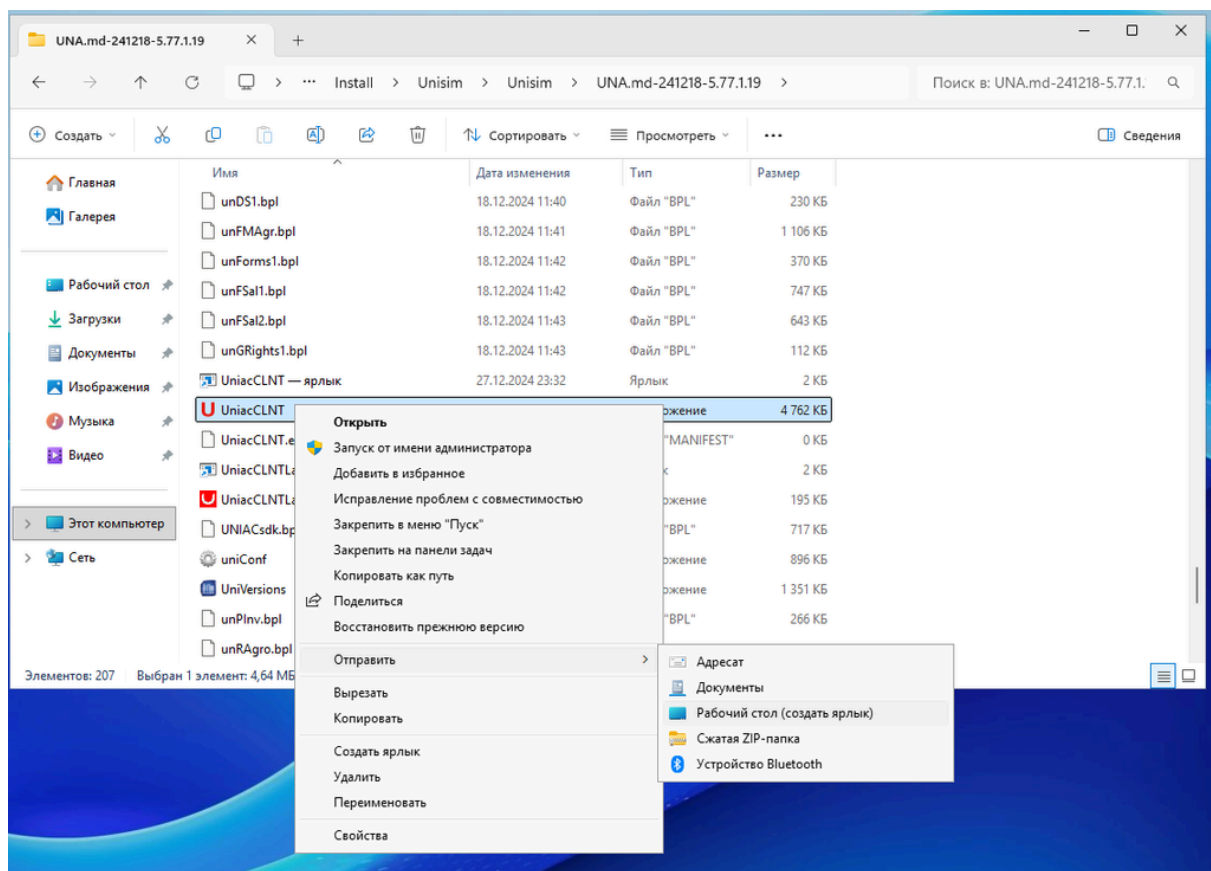
5. Next step in unisim folder open the UNA.md folder with date 13.01.2026



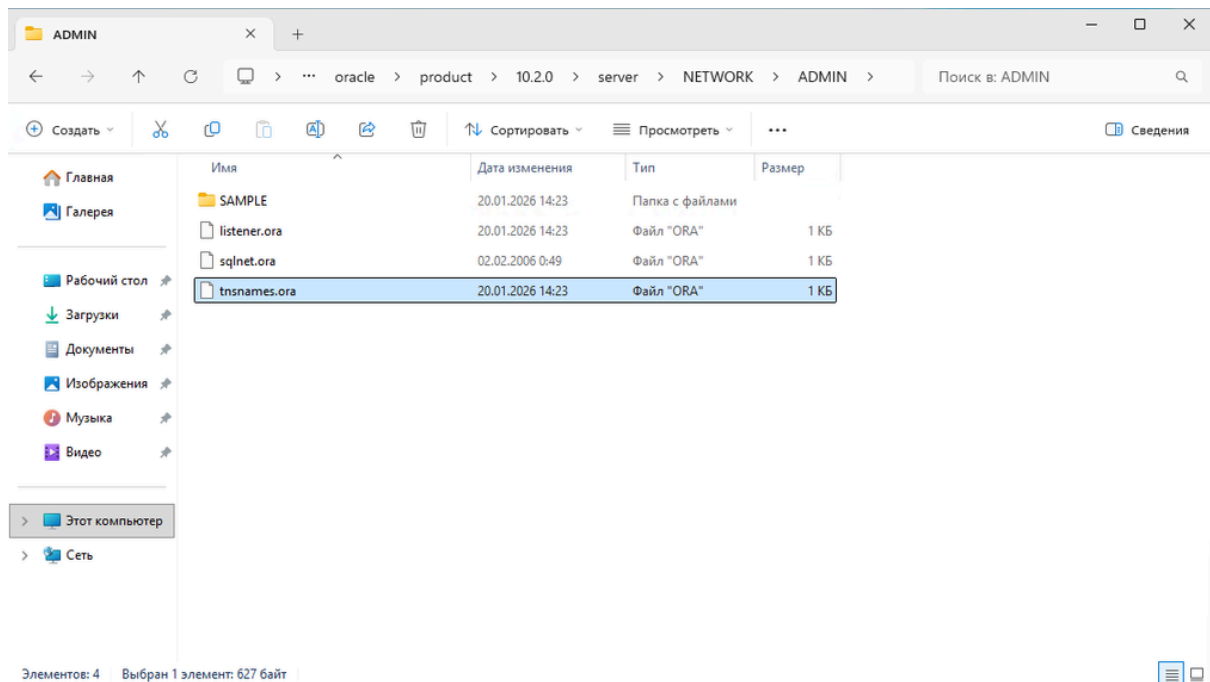
6. In folder find the UnuacCLNT app



7. Right click and make a shortcut



8. Configuring the UNA tnsnames file, in path →
oracle\app\oracle\product\10.2.0\server\NETWORK\ADMIN\tnsnames.ora



9. Replace the text in file with following text:

XE =

(DESCRIPTION =

(ADDRESS = (PROTOCOL = TCP)(HOST = ts0.ab.local)(PORT = 1521))

(CONNECT_DATA =

(SERVER = DEDICATED)

(SERVICE_NAME = XE)

)

)

tnsnames.ora Network Configuration File:

E:\oracle\product\10.2.0\db_1\network\admin\tnsnames.ora

Generated by Oracle configuration tools.

bomba23 =

```
(DESCRIPTION =  
  (ADDRESS_LIST =  
    (ADDRESS = (PROTOCOL = TCP)(HOST = 192.168.128.254)(PORT = 1521))  
  )  
  (CONNECT_DATA =  
    (SERVICE_NAME = pdb1_ab.bomba)  
  )  
)
```

vfua_test =

```
(DESCRIPTION =  
  (ADDRESS_LIST =  
    (ADDRESS = (PROTOCOL = TCP)(HOST = 192.168.1.112)(PORT = 1521))  
  )  
  (CONNECT_DATA =  
    (SERVICE_NAME = pdb1)  
  )  
)
```

bmb_test =

```
(DESCRIPTION =  
  (ADDRESS = (PROTOCOL = TCP)(HOST = 10.10.9.9)(PORT = 1521))  
  (CONNECT_DATA =  
    (SERVER = DEDICATED)
```

```
(SERVICE_NAME = bombapdb1.ab.md)
)
)
```

casalot =

```
(DESCRIPTION =
  (ADDRESS_LIST =
    (ADDRESS = (PROTOCOL = TCP)(HOST = 192.168.1.68)(PORT = 1521))
  )
  (CONNECT_DATA =
    (SERVICE_NAME = pdb1)
  )
)
```

bm =

```
(DESCRIPTION =
  (ADDRESS_LIST =
    (ADDRESS = (PROTOCOL = TCP)(HOST = 192.168.1.212)(PORT = 1521))
  )
  (CONNECT_DATA =
    (SERVICE_NAME = db1.md)
  )
)
```

av =

(DESCRIPTION =

(ADDRESS_LIST =

(ADDRESS = (PROTOCOL = TCP)(HOST = 192.168.1.211)(PORT = 1521))

)

(CONNECT_DATA =

(SERVICE_NAME = db1.md)

)

)

tt =

(DESCRIPTION =

(ADDRESS_LIST =

(ADDRESS = (PROTOCOL = TCP)(HOST = 192.168.1.213)(PORT = 1521))

)

(CONNECT_DATA =

(SERVICE_NAME = db1.md)

)

)

sirius =

(DESCRIPTION =

(ADDRESS = (PROTOCOL = TCP)(HOST = 10.9.104.21)(PORT = 1521))

```
(CONNECT_DATA =  
  (SERVER = DEDICATED)  
  (SERVICE_NAME = wldb)  
)  
)
```

bmb_new =

```
(DESCRIPTION =  
  (ADDRESS = (PROTOCOL = TCP)(HOST = 192.168.128.100)(PORT = 1521))  
  (CONNECT_DATA =  
    (SERVER = DEDICATED)  
    (SERVICE_NAME = pdb1_ab.bomba)  
  )  
)
```

cassa_test =

```
(DESCRIPTION =  
  (ADDRESS = (PROTOCOL = TCP)(HOST = 185.181.230.151)(PORT = 1521))  
  (CONNECT_DATA =  
    (SERVER = DEDICATED)  
    (SERVICE_NAME = xe)  
  )  
)
```

#AV =

(DESCRIPTION =

(ADDRESS_LIST =

(ADDRESS = (PROTOCOL = TCP)(HOST = 192.168.1.134)(PORT = 1521))

)

(CONNECT_DATA =

(SERVICE_NAME = db1.md)

)

)

bm2 =

(DESCRIPTION =

(ADDRESS_LIST =

(ADDRESS = (PROTOCOL = TCP)(HOST = 192.168.1.215)(PORT = 1521))

)

(CONNECT_DATA =

(SERVICE_NAME = pdb1.md)

)

)

bomba_old2020 =

(DESCRIPTION =

(ADDRESS = (PROTOCOL = TCP)(HOST = 192.168.1.150)(PORT = 1521))

```
(CONNECT_DATA =  
  (SERVER = DEDICATED)  
  (SERVICE_NAME = bomba.concern.md)  
)  
)
```

bomba_old =

```
(DESCRIPTION =  
  (ADDRESS = (PROTOCOL = TCP)(HOST = 192.168.1.108)(PORT = 1521))  
  (CONNECT_DATA =  
    (SERVER = DEDICATED)  
    (SERVICE_NAME = bomba.concern.md)  
  )  
)
```

bomba_old_new =

```
(DESCRIPTION =  
  (ADDRESS = (PROTOCOL = TCP)(HOST = 192.168.1.249)(PORT = 1521))  
  (CONNECT_DATA =  
    (SERVER = DEDICATED)  
    (SERVICE_NAME = PDB1)  
  )  
)
```

UPGRADE =

(DESCRIPTION =

(ADDRESS_LIST =

(ADDRESS = (PROTOCOL = TCP)(HOST = 192.168.10.93)(PORT = 1521))

)

(CONNECT_DATA =

(SERVICE_NAME = bomba.world)

)

)

cloudbd =

(DESCRIPTION =

(ADDRESS = (PROTOCOL = TCP)(HOST = 93.115.136.18)(PORT = 4024))

(ADDRESS = (PROTOCOL = TCP)(HOST = 195.22.241.126)(PORT = 4024))

(ADDRESS = (PROTOCOL = TCP)(HOST = una.md)(PORT = 4024))

(ADDRESS = (PROTOCOL = TCP)(HOST = orange.una.md)(PORT = 4024))

(CONNECT_DATA =

(SERVER = DEDICATED)

(SERVICE_NAME = cloudbd.world)

)

)

clouddev =

(DESCRIPTION =


```
(ADDRESS = (PROTOCOL = TCP)(HOST = 192.168.0.24)(PORT = 1521))  
(ADDRESS = (PROTOCOL = TCP)(HOST = 93.115.136.18)(PORT = 4024))  
(ADDRESS = (PROTOCOL = TCP)(HOST = 195.22.241.126)(PORT = 4024))  
(ADDRESS = (PROTOCOL = TCP)(HOST = una.md)(PORT = 4024))  
(ADDRESS = (PROTOCOL = TCP)(HOST = orange.una.md)(PORT = 4024))  
(CONNECT_DATA =  
  (SERVER = DEDICATED)  
  (SERVICE_NAME = cloudev.world)  
)  
)
```

```
cloudnew =(DESCRIPTION=(CONNECT_TIMEOUT=5)  
(TRANSPORT_CONNECT_TIMEOUT=3)(RETRY_COUNT=3)(ADDRESS_LIST=  
(LOAD_BALANCE=on)(ADDRESS=(PROTOCOL=TCP)(HOST=10.0.1.3)(PORT=1521)))  
(CONNECT_DATA=(SERVICE_NAME=DB_fra2sx.db.bomba.oraclevcn.com)))
```

```
DB_PDB1 =  
(DESCRIPTION =  
  (ADDRESS = (PROTOCOL = TCP)(HOST = 10.0.1.3)(PORT = 1521))  
  (CONNECT_DATA =  
    (SERVER = DEDICATED)  
    (SERVICE_NAME = db_pdb1.db.bomba.oraclevcn.com)  
  )  
)
```

AB_PDB1 =

(DESCRIPTION =

(ADDRESS = (PROTOCOL = TCP)(HOST = 192.168.128.100)(PORT = 1521))

(CONNECT_DATA =

(SERVER = DEDICATED)

(SERVICE_NAME = pdb1_ab.bomba)

)

)

CONCERN_OLD =

(DESCRIPTION = (SDU=32768)

(ADDRESS = (PROTOCOL = TCP)(HOST = 192.168.10.94)(PORT = 1521))

(CONNECT_DATA =

(SERVER = DEDICATED)

(SERVICE_NAME = bomba.concern.md)

)

)

BOMBA.CONCERN.MD_OLD =

(DESCRIPTION = (SDU=32768)

(ADDRESS = (PROTOCOL = TCP)(HOST = 192.168.10.94)(PORT = 1521))

(CONNECT_DATA =

(SERVER = DEDICATED)

```
(SERVICE_NAME = bomba.concern.md)
)
)
```

BMB_ARH =

```
(DESCRIPTION =
  (ADDRESS_LIST =
    (ADDRESS = (PROTOCOL = TCP)(HOST = 192.168.10.194)(PORT = 1521))
  )
  (CONNECT_DATA =
    (SERVICE_NAME = bomba.concern.md)
  )
)
```

BOMBA.GRAND.MD =

```
(DESCRIPTION =
  (ADDRESS = (PROTOCOL = TCP)(HOST = 192.168.1.1)(PORT = 1521))
  (CONNECT_DATA =
    (SERVER = DEDICATED)
    (SERVICE_NAME = bomba.GRAND.md)
  )
)
```

rialto.MD =

```
(DESCRIPTION =  
  (ADDRESS = (PROTOCOL = TCP)(HOST = 192.168.1.46)(PORT = 1521))  
  (CONNECT_DATA =  
    (SERVER = DEDICATED)  
    (SERVICE_NAME = bosch.world)  
  )  
)
```

```
BOMBA.CM4.MD =  
(DESCRIPTION =  
  (ADDRESS_LIST =  
    (ADDRESS = (PROTOCOL = TCP)(HOST = 192.168.1.161)(PORT = 1521))  
  )  
  (CONNECT_DATA =  
    (SERVICE_NAME = bomba.cm4.md)  
  )  
)
```

```
#CB2.GRAND.MD =  
# (DESCRIPTION =  
#   (ADDRESS = (PROTOCOL = TCP)(HOST = 192.168.4.50)(PORT = 1521))  
#   (CONNECT_DATA =  
#     (SERVER = DEDICATED)
```

```
# (SERVICE_NAME = CB2.GRAND.md)
```

```
# )
```

```
# )
```

```
CB3.WORLD =
```

```
(DESCRIPTION =
```

```
(ADDRESS = (PROTOCOL = TCP)(HOST = 192.168.2.19)(PORT = 1521))
```

```
(CONNECT_DATA =
```

```
(SERVER = DEDICATED)
```

```
(SERVICE_NAME = XEPDB1)
```

```
)
```

```
)
```

```
EXTPROC_CONNECTION_DATA =
```

```
(DESCRIPTION =
```

```
(ADDRESS_LIST =
```

```
(ADDRESS = (PROTOCOL = IPC)(KEY = EXTPROC0))
```

```
)
```

```
(CONNECT_DATA =
```

```
(SID = PLSExtProc)
```

```
(PRESENTATION = RO)
```

```
)
```

```
)
```

dball =

(DESCRIPTION =

(ADDRESS_LIST =

(ADDRESS = (PROTOCOL = TCP)(HOST = 192.168.1.186)(PORT = 1521))

)

(CONNECT_DATA =

(SERVER = DEDICATED)

(SERVICE_NAME = alina.office.md)

)

)

BOSHSERV.ESSO.MD =

(DESCRIPTION =

(ADDRESS_LIST =

(ADDRESS = (PROTOCOL = TCP)(HOST = 192.168.3.24)(PORT = 1521))

)

(CONNECT_DATA =

(SERVICE_NAME = BOSHSERV.esso.md)

)

)

CB2.CM4.MD =

(DESCRIPTION =

(ADDRESS_LIST =

```
(ADDRESS = (PROTOCOL = TCP)(HOST = 192.168.8.5)(PORT = 1521))  
)  
(CONNECT_DATA =  
  (SERVICE_NAME = XEPDB1)  
)  
)
```

CB2.BM.MD =

```
(DESCRIPTION =  
  (ADDRESS_LIST =  
    (ADDRESS = (PROTOCOL = TCP)(HOST = 192.168.4.3)(PORT = 1521))  
  )  
(CONNECT_DATA =  
  (SERVICE_NAME = cb2.bm.md)  
)  
)
```

BOMBA.new =

```
(DESCRIPTION =  
  (ADDRESS_LIST =  
    (ADDRESS = (PROTOCOL = TCP)(HOST = 185.181.228.73)(PORT = 1521))  
  )  
(CONNECT_DATA =  
  (SERVICE_NAME = bomba.concern.md)
```

)

)

ESSO =

(DESCRIPTION =

(ADDRESS_LIST =

(ADDRESS = (PROTOCOL = TCP)(HOST = 192.168.10.95)(PORT = 1521))

)

(CONNECT_DATA =

(SERVICE_NAME = bomba.arh.md)

)

)

CB2.PR.MD =

(DESCRIPTION =

(ADDRESS_LIST =

(ADDRESS = (PROTOCOL = TCP)(HOST = 192.168.5.31)(PORT = 1521))

)

(CONNECT_DATA =

(SERVICE_NAME = XEPDB1)

)

)

CB2.AU.MD =


```
(DESCRIPTION =  
  (ADDRESS_LIST =  
    (ADDRESS = (PROTOCOL = TCP)(HOST = 192.168.6.193)(PORT = 1521))  
  )  
  (CONNECT_DATA =  
    (SERVICE_NAME = XEPDB1)  
  )  
)
```

CB2.AU1.MD =

```
(DESCRIPTION =  
  (ADDRESS_LIST =  
    (ADDRESS = (PROTOCOL = TCP)(HOST = 192.168.6.10)(PORT = 1521))  
  )  
  (CONNECT_DATA =  
    (SERVICE_NAME = CB2.au1.md)  
  )  
)
```

#CB2.BL.MD =

```
# (DESCRIPTION =  
#   (ADDRESS_LIST =  
#     (ADDRESS = (PROTOCOL = TCP)(HOST = 192.168.7.11)(PORT = 1521))  
#   )
```

```
# (CONNECT_DATA =  
#   (SERVICE_NAME = CB2.bl1.md)  
# )  
# )
```

CB2.BL1.MD =

```
(DESCRIPTION =  
  (ADDRESS_LIST =  
    (ADDRESS = (PROTOCOL = TCP)(HOST = 192.168.7.13)(PORT = 1521))  
  )  
  (CONNECT_DATA =  
    (SERVICE_NAME = XEPDB1)  
  )  
)
```

POS.ARH.MD =

```
(DESCRIPTION =  
  (ADDRESS_LIST =  
    (ADDRESS = (PROTOCOL = TCP)(HOST = 192.168.1.194)(PORT = 1521))  
  )  
  (CONNECT_DATA =  
    (SERVICE_NAME = POS.ARH.MD)  
  )  
)
```

BOMBA.ARH.MD =

(DESCRIPTION =

(ADDRESS = (PROTOCOL = TCP)(HOST = 192.168.10.194)(PORT = 1521))

(CONNECT_DATA =

(SERVER = DEDICATED)

(SERVICE_NAME = bomba.ARH.MD)

)

)

TEST =

(DESCRIPTION =

(ADDRESS = (PROTOCOL = TCP)(HOST = 192.168.1.186)(PORT = 1521))

(CONNECT_DATA =

(SERVER = DEDICATED)

(SERVICE_NAME = pdb)

)

)

Alina =

(DESCRIPTION =

(ADDRESS = (PROTOCOL = TCP)(HOST = 192.168.1.140)(PORT = 1521))

(CONNECT_DATA =

```
(SERVER = DEDICATED)

(SERVICE_NAME = market1.ab.md)

)

)
```

BOMBA2_old =

```
(DESCRIPTION =

(ADDRESS = (PROTOCOL = TCP)(HOST = 192.168.146.20)(PORT = 1521))

(CONNECT_DATA =

(SERVER = DEDICATED)

(SERVICE_NAME = bomba.concern.md)

)

)
```

BOMBA2 =

```
(DESCRIPTION =

(ADDRESS = (PROTOCOL = TCP)(HOST = 192.168.1.153)(PORT = 1521))

(CONNECT_DATA =

(SERVER = DEDICATED)

(SERVICE_NAME = bomba.concern.md)

)

)
```

CONCERN_old =

(DESCRIPTION = (SDU=32768)

(ADDRESS = (PROTOCOL = TCP)(HOST = 192.168.146.20)(PORT = 1521))

(CONNECT_DATA =

(SERVER = DEDICATED)

(SERVICE_NAME = bomba.concern.md)

)

)

CONCERN =

(DESCRIPTION = (SDU=32768)

(ADDRESS = (PROTOCOL = TCP)(HOST = 192.168.1.153)(PORT = 1521))

(CONNECT_DATA =

(SERVER = DEDICATED)

(SERVICE_NAME = bomba.concern.md)

)

)

BOMBA =

(DESCRIPTION = (SDU=32768)

(ADDRESS = (PROTOCOL = TCP)(HOST = 192.168.128.254)(PORT = 1521))

(CONNECT_DATA =

(SERVER = DEDICATED)

(SERVICE_NAME = bomba.concern.md)

)

)

AB_old =

(DESCRIPTION = (SDU=32768)

(ADDRESS = (PROTOCOL = TCP)(HOST = 192.168.128.254)(PORT = 1521))

(CONNECT_DATA =

(SERVER = DEDICATED)

(SERVICE_NAME = bomba.concern.md)

)

)

AB1 =

(DESCRIPTION = (SDU=32768)

(ADDRESS = (PROTOCOL = TCP)(HOST = 185.147.50.237)(PORT = 1521))

(CONNECT_DATA =

(SERVER = DEDICATED)

(SERVICE_NAME = bombapdb1)

)

)

AB =

(DESCRIPTION = (SDU=32768)

(ADDRESS = (PROTOCOL = TCP)(HOST = una.ab.local)(PORT = 1521))

(CONNECT_DATA =

(SERVER = DEDICATED)

```
(SERVICE_NAME = bombapdb2)
)
)
```

AB_new =

```
(DESCRIPTION =
  (ADDRESS = (PROTOCOL = TCP)(HOST = 192.168.1.153)(PORT = 1521))
  (CONNECT_DATA =
    (SERVER = DEDICATED)
    (SERVICE_NAME = ab.world)
  )
)
```

BOMBA.CONCERN.MD_old =

```
(DESCRIPTION = (SDU=32768)
  (ADDRESS = (PROTOCOL = TCP)(HOST = 192.168.146.20)(PORT = 1521))
  (CONNECT_DATA =
    (SERVER = DEDICATED)
    (SERVICE_NAME = bomba.concern.md)
  )
)
```

BOMBA.CONCERN.MD =

(DESCRIPTION = (SDU=32768)

(ADDRESS = (PROTOCOL = TCP)(HOST = una.ab.local)(PORT = 1521))

(CONNECT_DATA =

(SERVER = DEDICATED)

(SERVICE_NAME = bombapdb2)

)

)

FISC =

(DESCRIPTION =

(ADDRESS = (PROTOCOL = TCP)(HOST = 192.168.1.250)(PORT = 1521))

(CONNECT_DATA =

(SERVER = DEDICATED)

(SERVICE_NAME = pdb1.bomba)

)

)

b11.MD =

(DESCRIPTION =

(ADDRESS_LIST =

(ADDRESS = (PROTOCOL = TCP)(HOST = 10.0.13.11)(PORT = 1521))

)

(CONNECT_DATA =


```
(SERVICE_NAME = xepdb1)
)
)
```

BMB7.md =

```
(DESCRIPTION =
  (ADDRESS = (PROTOCOL = TCP)(HOST = 192.168.6.193)(PORT = 1521))
  (CONNECT_DATA =
    (SERVER = DEDICATED)
    (SERVICE_NAME = xepdb1)
  )
)
```

bmb2.MD =

```
(DESCRIPTION =
  (ADDRESS_LIST =
    (ADDRESS = (PROTOCOL = TCP)(HOST = 10.0.13.40)(PORT = 1521))
  )
  (CONNECT_DATA =
    (SERVICE_NAME = xepdb1)
```

)

)

#b11.MD =

(DESCRIPTION =

(ADDRESS_LIST =

(ADDRESS = (PROTOCOL = TCP)(HOST = 10.0.13.6)(PORT = 1521))

)

(CONNECT_DATA =

(SERVICE_NAME = bm11.md)

)

)

CB2.GRAND.md =

(DESCRIPTION =

(ADDRESS_LIST =

(ADDRESS = (PROTOCOL = TCP)(HOST = 10.0.12.16)(PORT = 1521))

)

(CONNECT_DATA =

(SERVICE_NAME = CB2.GRAND.md)

)

)

MARKET =

(DESCRIPTION =

(ADDRESS_LIST =

(ADDRESS = (PROTOCOL = TCP)(HOST = 192.168.1.7)(PORT = 1521))

)

(CONNECT_DATA =

(SERVICE_NAME = market.world)

)

)

CB12.GRAND.MD_old =

(DESCRIPTION =

(ADDRESS = (PROTOCOL = TCP)(HOST = 10.0.12.16)(PORT = 1521))

(CONNECT_DATA =

(SERVER = DEDICATED)

(SERVICE_NAME = XE)s

)

)

ALTEST =

(DESCRIPTION =

(ADDRESS = (PROTOCOL = TCP)(HOST = 10.0.11.14)(PORT = 1521))

(CONNECT_DATA =

```
(SERVER = DEDICATED)

(SERVICE_NAME = XE)

)

)
```

Bmb1.md =

```
(DESCRIPTION =

(ADDRESS_LIST =

  (ADDRESS = (PROTOCOL = TCP)(HOST = 192.168.11.126)(PORT = 1521))

)

(CONNECT_DATA =

  (SERVICE_NAME = XEPDB1)

)

)
```

Bmb1_rezerv.md =

```
(DESCRIPTION =

(ADDRESS_LIST =

  (ADDRESS = (PROTOCOL = TCP)(HOST = 192.168.11.9)(PORT = 1521))

)

(CONNECT_DATA =

  (SERVICE_NAME = xe)

)

)
```

CB12.GRAND.MD =

(DESCRIPTION =

(ADDRESS = (PROTOCOL = TCP)(HOST = 10.0.12.16)(PORT = 1521))

(CONNECT_DATA =

(SERVER = DEDICATED)

(SERVICE_NAME = XE)

)

)

BMB12.md =

(DESCRIPTION =

(ADDRESS = (PROTOCOL = TCP)(HOST = 10.0.12.46)(PORT = 1521))

(CONNECT_DATA =

(SERVER = DEDICATED)

(SERVICE_NAME = XEPDB1)

)

)

cb12.rezerv.md =

(DESCRIPTION =

(ADDRESS = (PROTOCOL = TCP)(HOST = 10.0.12.12)(PORT = 1521))

(CONNECT_DATA =

(SERVER = DEDICATED)

```
(SERVICE_NAME = XE)
)
)
```

A2.cassa.md =

```
(DESCRIPTION =
  (ADDRESS = (PROTOCOL = TCP)(HOST = 10.0.11.104)(PORT = 1521))
  (CONNECT_DATA =
    (SERVER = DEDICATED)
    (SERVICE_NAME = XEPDB1)
  )
)
```

A1.cassa.md =

```
(DESCRIPTION =
  (ADDRESS = (PROTOCOL = TCP)(HOST = 10.0.10.18)(PORT = 1521))
  (CONNECT_DATA =
    (SERVER = DEDICATED)
    (SERVICE_NAME = xe)
  )
)
```

A6.cassa.md =

```
(DESCRIPTION =
```

```
(ADDRESS = (PROTOCOL = TCP)(HOST = 10.0.0.3)(PORT = 1521))  
(CONNECT_DATA =  
  (SERVER = DEDICATED)  
  (SERVICE_NAME = XEPDB1)  
)  
)
```

A7.cassa.md =

```
(DESCRIPTION =  
  (ADDRESS = (PROTOCOL = TCP)(HOST = 10.0.1.11)(PORT = 1521))  
  (CONNECT_DATA =  
    (SERVER = DEDICATED)  
    (SERVICE_NAME = XE)  
  )  
)
```

A8.cassa.md =

```
(DESCRIPTION =  
  (ADDRESS = (PROTOCOL = TCP)(HOST = 10.0.13.15)(PORT = 1521))  
  (CONNECT_DATA =  
    (SERVER = DEDICATED)  
    (SERVICE_NAME = XE)  
  )
```

)

A9.cassa.md =

(DESCRIPTION =

(ADDRESS = (PROTOCOL = TCP)(HOST = 10.0.3.34)(PORT = 1521))

(CONNECT_DATA =

(SERVER = DEDICATED)

(SERVICE_NAME = XEPDB1)

)

)

A9n.cassa.md =

(DESCRIPTION =

(ADDRESS = (PROTOCOL = TCP)(HOST = 10.0.3.34)(PORT = 1521))

(CONNECT_DATA =

(SERVER = DEDICATED)

(SERVICE_NAME = XE)

)

)

A10.cassa.md =

(DESCRIPTION =

(ADDRESS = (PROTOCOL = TCP)(HOST = 10.0.5.6)(PORT = 1521))


```
(CONNECT_DATA =  
  (SERVER = DEDICATED)  
  (SERVICE_NAME = xepdb1)  
)  
)
```

A11.cassa.md =

```
(DESCRIPTION =  
  (ADDRESS = (PROTOCOL = TCP)(HOST = 10.0.6.6)(PORT = 1521))  
  (CONNECT_DATA =  
    (SERVER = DEDICATED)  
    (SERVICE_NAME = XEPDB1)  
  )  
)
```

bmb8 =

```
(DESCRIPTION =
```

```
(ADDRESS_LIST =
```

```
(ADDRESS = (PROTOCOL = TCP)(HOST = 192.168.7.13)(PORT = 1521))  
)
```

```
(CONNECT_DATA =
```

(SERVICE_NAME = XEPDB1)

)

)

A12.cassa.md =

(DESCRIPTION =

(ADDRESS = (PROTOCOL = TCP)(HOST = 10.0.9.2)(PORT = 1521))

(CONNECT_DATA =

(SERVER = DEDICATED)

(SERVICE_NAME = xepdb1)

)

)

A14.cassa.md =

(DESCRIPTION =

(ADDRESS = (PROTOCOL = TCP)(HOST = 10.0.15.94)(PORT = 1521))

(CONNECT_DATA =

(SERVER = DEDICATED)

(SERVICE_NAME = XEPDB1)

)

)

A15.cassa.md =

```
(DESCRIPTION =  
  (ADDRESS = (PROTOCOL = TCP)(HOST = 10.0.16.11)(PORT = 1521))  
  (CONNECT_DATA =  
    (SERVER = DEDICATED)  
    (SERVICE_NAME = XEPDB1)  
  )  
)
```

A16.cassa.md =

```
(DESCRIPTION =  
  (ADDRESS = (PROTOCOL = TCP)(HOST = 192.168.12.9)(PORT = 1521))  
  (CONNECT_DATA =  
    (SERVER = DEDICATED)  
    (SERVICE_NAME = XEPDB1)  
  )  
)
```

A17.cassa.md =

```
(DESCRIPTION =  
  (ADDRESS = (PROTOCOL = TCP)(HOST = 192.168.17.225)(PORT = 1521))  
  (CONNECT_DATA =  
    (SERVER = DEDICATED)  
    (SERVICE_NAME = XEPDB1)  
  )
```

)

A18.cassa.md =

(DESCRIPTION =

(ADDRESS = (PROTOCOL = TCP)(HOST = 192.168.33.38)(PORT = 1521))

(CONNECT_DATA =

(SERVER = DEDICATED)

(SERVICE_NAME = XEPDB1)

)

)

A19.cassa.md =

(DESCRIPTION =

(ADDRESS = (PROTOCOL = TCP)(HOST = 192.168.36.69)(PORT = 1521))

(CONNECT_DATA =

(SERVER = DEDICATED)

(SERVICE_NAME = XEPDB1)

)

)

A20.cassa.md =

(DESCRIPTION =

```
(ADDRESS = (PROTOCOL = TCP)(HOST = 192.168.37.100)(PORT = 1521))
```

```
(CONNECT_DATA =
```

```
(SERVER = DEDICATED)
```

```
(SERVICE_NAME = XEPDB1)
```

```
)
```

```
)
```

A21.cassa.md =

```
(DESCRIPTION =
```

```
(ADDRESS = (PROTOCOL = TCP)(HOST = 192.168.39.19)(PORT = 1521))
```

```
(CONNECT_DATA =
```

```
(SERVER = DEDICATED)
```

```
(SERVICE_NAME = XEPDB1)
```

```
)
```

```
)
```

A22.cassa.md =

```
(DESCRIPTION =
```

```
(ADDRESS = (PROTOCOL = TCP)(HOST = 192.168.40.19)(PORT = 1521))
```

```
(CONNECT_DATA =
```

```
(SERVER = DEDICATED)
```

```
(SERVICE_NAME = XEPDB1)
```

```
)
```

```
)
```

A23.cassa.md =

(DESCRIPTION =

(ADDRESS = (PROTOCOL = TCP)(HOST = 192.168.41.96)(PORT = 1521))

(CONNECT_DATA =

(SERVER = DEDICATED)

(SERVICE_NAME = XEPDB1)

)

)

A24.cassa.md =

(DESCRIPTION =

(ADDRESS = (PROTOCOL = TCP)(HOST = 192.168.42.21)(PORT = 1521))

(CONNECT_DATA =

(SERVER = DEDICATED)

(SERVICE_NAME = XEPDB1)

)

)

A25.cassa.md =

(DESCRIPTION =

(ADDRESS = (PROTOCOL = TCP)(HOST = 192.168.43.38)(PORT = 1521))

(CONNECT_DATA =

(SERVER = DEDICATED)

```
(SERVICE_NAME = XEPDB1)
)
)
```

A26.cassa.md =

```
(DESCRIPTION =
  (ADDRESS = (PROTOCOL = TCP)(HOST = 192.168.44.27)(PORT = 1521))
  (CONNECT_DATA =
    (SERVER = DEDICATED)
    (SERVICE_NAME = XEPDB1)
  )
)
```

A27.cassa.md =

```
(DESCRIPTION =
  (ADDRESS = (PROTOCOL = TCP)(HOST = 192.168.45.32)(PORT = 1521))
  (CONNECT_DATA =
    (SERVER = DEDICATED)
    (SERVICE_NAME = XEPDB1)
  )
)
```

A28.cassa.md =

```
(DESCRIPTION =
```

```
(ADDRESS = (PROTOCOL = TCP)(HOST = 192.168.46.26)(PORT = 1521))  
(CONNECT_DATA =  
  (SERVER = DEDICATED)  
  (SERVICE_NAME = XEPDB1)  
)  
)
```

A29.cassa.md =

```
(DESCRIPTION =  
  (ADDRESS = (PROTOCOL = TCP)(HOST = 192.168.48.48)(PORT = 1521))  
  (CONNECT_DATA =  
    (SERVER = DEDICATED)  
    (SERVICE_NAME = XE)  
  )  
)
```

A30.cassa.md =

```
(DESCRIPTION =  
  (ADDRESS = (PROTOCOL = TCP)(HOST = 192.168.47.12)(PORT = 1521))  
  (CONNECT_DATA =  
    (SERVER = DEDICATED)  
    (SERVICE_NAME = XEPDB1)  
  )  
)
```


A31.cassa.md =

(DESCRIPTION =

(ADDRESS = (PROTOCOL = TCP)(HOST = 10.0.24.175)(PORT = 1521))

(CONNECT_DATA =

(SERVER = DEDICATED)

(SERVICE_NAME = XEPDB1)

)

)

office.cassa.md =

(DESCRIPTION =

(ADDRESS = (PROTOCOL = TCP)(HOST = 10.0.14.44)(PORT = 1521))

(CONNECT_DATA =

(SERVER = DEDICATED)

(SERVICE_NAME = XE)

)

)

web.cassa.md =

(DESCRIPTION =

(ADDRESS = (PROTOCOL = TCP)(HOST = 10.0.14.50)(PORT = 1521))

(CONNECT_DATA =

```
(SERVER = DEDICATED)
(SERVICE_NAME = XE)
)
)
```

webcredit.cassa.md =

```
(DESCRIPTION =
  (ADDRESS = (PROTOCOL = TCP)(HOST = 192.168.1.76)(PORT = 1521))
  (CONNECT_DATA =
    (SERVER = DEDICATED)
    (SERVICE_NAME = XE)
  )
)
```

test_bmb =

```
(DESCRIPTION =
  (ADDRESS = (PROTOCOL = TCP)(HOST = 192.168.1.176)(PORT = 1521))
  (CONNECT_DATA =
    (SERVER = DEDICATED)
    (SERVICE_NAME = XE)
  )
)
```

adidas.cassa.md =

```
(DESCRIPTION =  
  (ADDRESS = (PROTOCOL = TCP)(HOST = 192.168.1.206)(PORT = 1521))  
  (CONNECT_DATA =  
    (SERVER = DEDICATED)  
    (SERVICE_NAME = XEPDB1)  
  )  
)
```

nike.cassa.md =

```
(DESCRIPTION =  
  (ADDRESS = (PROTOCOL = TCP)(HOST = 192.168.1.185)(PORT = 1521))  
  (CONNECT_DATA =  
    (SERVER = DEDICATED)  
    (SERVICE_NAME = XEPDB1)  
  )  
)
```

bmb4=

```
(DESCRIPTION =  
  (ADDRESS = (PROTOCOL = TCP)(HOST = 192.168.8.12)(PORT = 1521))  
  (CONNECT_DATA =  
    (SERVER = DEDICATED)  
    (SERVICE_NAME = XE)  
  )
```

)

bmb6=

(DESCRIPTION =

(ADDRESS = (PROTOCOL = TCP)(HOST = 192.168.5.31)(PORT = 1521))

(CONNECT_DATA =

(SERVER = DEDICATED)

(SERVICE_NAME = XE)

)

)

columbia.cassa.md =

(DESCRIPTION =

(ADDRESS = (PROTOCOL = TCP)(HOST = 192.168.1.173)(PORT = 1521))

(CONNECT_DATA =

(SERVER = DEDICATED)

(SERVICE_NAME = XE)

)

)

boxer.cassa.md =

(DESCRIPTION =

(ADDRESS = (PROTOCOL = TCP)(HOST = 192.168.1.113)(PORT = 1521))

```
(CONNECT_DATA =  
  (SERVER = DEDICATED)  
  (SERVICE_NAME = XE)  
)  
)
```

Golden.cassa.md =

```
(DESCRIPTION =  
  (ADDRESS = (PROTOCOL = TCP)(HOST = 192.168.100.45)(PORT = 1521))  
  (CONNECT_DATA =  
    (SERVER = DEDICATED)  
    (SERVICE_NAME = XE)  
  )  
)
```

Goldend.cassa.md =

```
(DESCRIPTION =  
  (ADDRESS = (PROTOCOL = TCP)(HOST = 192.168.128.228)(PORT = 1521))  
  (CONNECT_DATA =  
    (SERVER = DEDICATED)  
    (SERVICE_NAME = XE)  
  )  
)
```

Goldens.cassa.md =

(DESCRIPTION =

(ADDRESS = (PROTOCOL = TCP)(HOST = 192.168.170.102)(PORT = 1521))

(CONNECT_DATA =

(SERVER = DEDICATED)

(SERVICE_NAME = XE)

)

)

Goldenr.cassa.md =

(DESCRIPTION =

(ADDRESS = (PROTOCOL = TCP)(HOST = 192.168.170.120)(PORT = 1521))

(CONNECT_DATA =

(SERVER = DEDICATED)

(SERVICE_NAME = XE)

)

)

Goldenb.cassa.md =

(DESCRIPTION =

(ADDRESS = (PROTOCOL = TCP)(HOST = 192.168.1.133)(PORT = 1521))

(CONNECT_DATA =

(SERVER = DEDICATED)

(SERVICE_NAME = XE)

)

)

```
# (ADDRESS = (PROTOCOL = TCP)(HOST = 192.168.128.245)(PORT = 1521))  
192.168.9.18
```

Patinoar.cassa.md =

(DESCRIPTION =

(ADDRESS = (PROTOCOL = TCP)(HOST = 192.168.170.112)(PORT = 1521))

(CONNECT_DATA =

(SERVER = DEDICATED)

(SERVICE_NAME = XE)

)

)

Karting.cassa.md =

(DESCRIPTION =

(ADDRESS = (PROTOCOL = TCP)(HOST = 192.168.170.14)(PORT = 1521))

(CONNECT_DATA =

(SERVER = DEDICATED)

(SERVICE_NAME = XEPDB1)

)

)

pz.cassa.md =

```
(DESCRIPTION =  
  (ADDRESS = (PROTOCOL = TCP)(HOST = 192.168.1.68)(PORT = 1521))  
  (CONNECT_DATA =  
    (SERVER = DEDICATED)  
    (SERVICE_NAME = XE)  
  )  
)
```

cotonella.cassa.md =

```
(DESCRIPTION =  
  (ADDRESS = (PROTOCOL = TCP)(HOST = 10.0.13.10)(PORT = 1521))  
  (CONNECT_DATA =  
    (SERVER = DEDICATED)  
    (SERVICE_NAME = XE)  
  )  
)
```

test_gg =

```
(DESCRIPTION =  
  (ADDRESS = (PROTOCOL = TCP)(HOST = 185.70.190.74)(PORT = 1521))  
  (CONNECT_DATA =  
    (SERVER = DEDICATED)  
    (SERVICE_NAME = bomba.db.md)  
  )  
)
```


)

stndb_gg =

(DESCRIPTION =

(ADDRESS = (PROTOCOL = TCP)(HOST = 185.70.190.76)(PORT = 1521))

(CONNECT_DATA =

(SERVER = DEDICATED)

(SERVICE_NAME = stndb.ab.md)

)

)

sport.cassa.md =

(DESCRIPTION =

(ADDRESS_LIST =

(ADDRESS = (PROTOCOL = TCP)(HOST = 10.0.19.83)(PORT = 1521))

)

(CONNECT_DATA =

(SERVICE_NAME = XEPDB1)

)

)

sportv.cassa.md =

(DESCRIPTION =

(ADDRESS_LIST =

```
(ADDRESS = (PROTOCOL = TCP)(HOST = 10.0.21.122)(PORT = 1521))  
)  
(CONNECT_DATA =  
  (SERVICE_NAME = XEPDB1)  
)  
)
```

sportb.cassa.md =

```
(DESCRIPTION =  
  (ADDRESS_LIST =  
    (ADDRESS = (PROTOCOL = TCP)(HOST = 192.168.23.119)(PORT = 1521))  
  )  
  (CONNECT_DATA =  
    (SERVICE_NAME = XEPDB1)  
  )  
)
```

sportw.cassa.md =

```
(DESCRIPTION =  
  (ADDRESS_LIST =  
    (ADDRESS = (PROTOCOL = TCP)(HOST = 10.0.19.125)(PORT = 1521))  
  )  
  (CONNECT_DATA =
```

```
(SERVICE_NAME = xe)
)
)
```

sportbw.cassa.md =

```
(DESCRIPTION =
  (ADDRESS = (PROTOCOL = TCP)(HOST = 192.168.23.173)(PORT = 1521))
  (CONNECT_DATA =
    (SERVER = DEDICATED)
    (SERVICE_NAME = XEPDB1)
  )
)
```

sportvw.cassa.md =

```
(DESCRIPTION =
  (ADDRESS_LIST =
    (ADDRESS = (PROTOCOL = TCP)(HOST = 10.0.21.105)(PORT = 1521))
  )
  (CONNECT_DATA =
    (SERVICE_NAME = XEPDB1)
  )
)
```

ps.cassa.md =

(DESCRIPTION =

(ADDRESS_LIST =

(ADDRESS = (PROTOCOL = TCP)(HOST = 10.0.20.90)(PORT = 1521))

)

(CONNECT_DATA =

(SERVICE_NAME = xe)

)

)

giant.cassa.md =

(DESCRIPTION =

(ADDRESS_LIST =

(ADDRESS = (PROTOCOL = TCP)(HOST = 192.168.18.244)(PORT = 1521))

)

(CONNECT_DATA =

(SERVICE_NAME = XEPDB1)

)

)

giantd.cassa.md =

(DESCRIPTION =

(ADDRESS_LIST =

```
(ADDRESS = (PROTOCOL = TCP)(HOST = 192.168.21.29)(PORT = 1521))  
)  
(CONNECT_DATA =  
  (SERVICE_NAME = xe)  
)  
)
```

giants.cassa.md =

```
(DESCRIPTION =  
  (ADDRESS_LIST =  
    (ADDRESS = (PROTOCOL = TCP)(HOST = 192.168.22.18)(PORT = 1521))  
  )  
  (CONNECT_DATA =  
    (SERVICE_NAME = xe)  
  )  
)
```

test.cassa.md =

```
(DESCRIPTION =  
  (ADDRESS = (PROTOCOL = TCP)(HOST = 192.168.1.197)(PORT = 1521))  
  (CONNECT_DATA =  
    (SERVER = DEDICATED)  
    (SERVICE_NAME = XEPDB1)  
  )
```

)

test.cassasl.md =

(DESCRIPTION =

(ADDRESS = (PROTOCOL = TCP)(HOST = 192.168.1.18)(PORT = 1521))

(CONNECT_DATA =

(SERVER = DEDICATED)

(SERVICE_NAME = XE)

)

)

BSHG.cassa.md =

(DESCRIPTION =

(ADDRESS = (PROTOCOL = TCP)(HOST = 192.168.88.210)(PORT = 1521))

(CONNECT_DATA =

(SERVER = DEDICATED)

(SERVICE_NAME = XE)

)

)

BSHGb.cassa.md =

(DESCRIPTION =

(ADDRESS = (PROTOCOL = TCP)(HOST = 192.168.19.99)(PORT = 1521))

(CONNECT_DATA =

```
(SERVER = DEDICATED)
(SERVICE_NAME = XE)
)
)
```

BSHGm.cassa.md =

```
(DESCRIPTION =
  (ADDRESS = (PROTOCOL = TCP)(HOST = 10.0.17.192)(PORT = 1521))
  (CONNECT_DATA =
    (SERVER = DEDICATED)
    (SERVICE_NAME = XE)
  )
)
```

BSHGo.cassa.md =

```
(DESCRIPTION =
  (ADDRESS = (PROTOCOL = TCP)(HOST = 10.0.18.194)(PORT = 1521))
  (CONNECT_DATA =
    (SERVER = DEDICATED)
    (SERVICE_NAME = XE)
  )
)
```

BSHGd.cassa.md =

```
(DESCRIPTION =  
  (ADDRESS = (PROTOCOL = TCP)(HOST = 10.0.25.192)(PORT = 1521))  
  (CONNECT_DATA =  
    (SERVER = DEDICATED)  
    (SERVICE_NAME = XEPDB1)  
  )  
)
```

GiantBl.cassa.md =

```
(DESCRIPTION =  
  (ADDRESS = (PROTOCOL = TCP)(HOST = 192.168.19.92)(PORT = 1521))  
  (CONNECT_DATA =  
    (SERVER = DEDICATED)  
    (SERVICE_NAME = XE)  
  )  
)
```

Giantch.cassa.md =

```
(DESCRIPTION =  
  (ADDRESS = (PROTOCOL = TCP)(HOST = 10.0.5.3)(PORT = 1521))  
  (CONNECT_DATA =  
    (SERVER = DEDICATED)  
    (SERVICE_NAME = XE)  
  )
```


)

Giantco.cassa.md =

(DESCRIPTION =

(ADDRESS = (PROTOCOL = TCP)(HOST = 10.0.3.33)(PORT = 1521))

(CONNECT_DATA =

(SERVER = DEDICATED)

(SERVICE_NAME = XE)

)

)

ps.ro =

(DESCRIPTION =

(ADDRESS = (PROTOCOL = TCP)(HOST = 194.102.184.229

)(PORT = 14521))

(CONNECT_DATA =

(SERVER = DEDICATED)

(SID = orcl)

)

)

#ps.ro =

(DESCRIPTION =

(ADDRESS = (PROTOCOL = TCP)(HOST = 86.122.116.98)(PORT = 21521))

```
# (CONNECT_DATA =  
#   (SERVER = DEDICATED)  
#   (SERVICE_NAME = wldb)  
# )  
# )
```

bmb9.MD =

```
(DESCRIPTION =  
  (ADDRESS = (PROTOCOL = TCP)(HOST = 192.168.9.179)(PORT = 1521))  
  (CONNECT_DATA =  
    (SERVER = DEDICATED)  
    (SERVICE_NAME = XEPDB1)  
  )  
)
```

sportpit.cassa.md =

```
(DESCRIPTION =  
  (ADDRESS = (PROTOCOL = TCP)(HOST = 192.168.100.20)(PORT = 1521))  
  (CONNECT_DATA =  
    (SERVER = DEDICATED)  
    (SERVICE_NAME = XE)  
  )  
)
```

```
EXTPROC_CONNECTION_DATA =  
  
(DESCRIPTION =  
  
  (ADDRESS_LIST =  
  
    (ADDRESS = (PROTOCOL = IPC)(KEY = EXTPROC_FOR_XE))  
  
  )  
  
(CONNECT_DATA =  
  
  (SID = PLSExtProc)  
  
  (PRESENTATION = RO)  
  
)  
  
)
```

```
ORACLRC_CONNECTION_DATA =  
  
(DESCRIPTION =  
  
  (ADDRESS_LIST =  
  
    (ADDRESS = (PROTOCOL = IPC)(KEY = EXTPROC_FOR_XE))  
  
  )  
  
(CONNECT_DATA =  
  
  (SID = CLRExtProc)  
  
  (PRESENTATION = RO)  
  
)  
  
)
```